



## 5600 Capacitively Coupled Plasma Option

### FEATURES

- Improved blank surface preparation
- Direct silver plating, no flash required
- No special process gas required

### OPTION PACKAGE

- SS antenna and distribution shields
- Impedance matching boxes
- Gate valve throttling kit
- Upgraded control box PCB
- Air bleed metering valve
- Software

RFX-600 Power Supply required

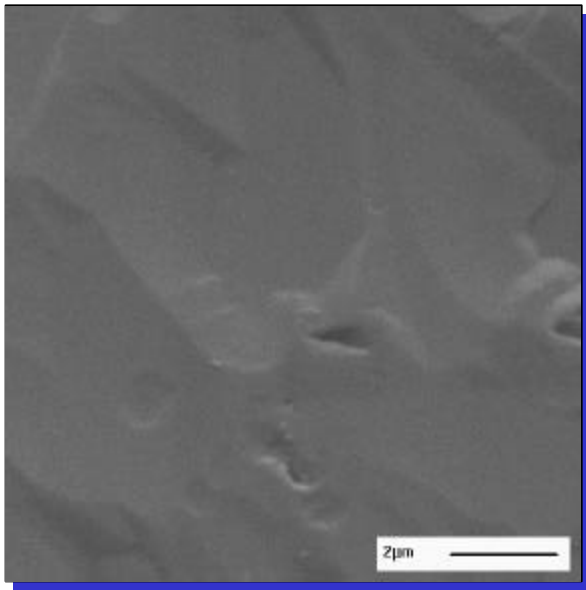
## SAUNDERS & ASSOCIATES, LLC

2520 E. Rose Garden Lane - Phoenix, Arizona 85050 USA (602) 971-9977 FAX (602) 971-5522  
E-Mail [sales@saunders-assoc.com](mailto:sales@saunders-assoc.com) - World Wide Web <http://www.saunders-assoc.com>

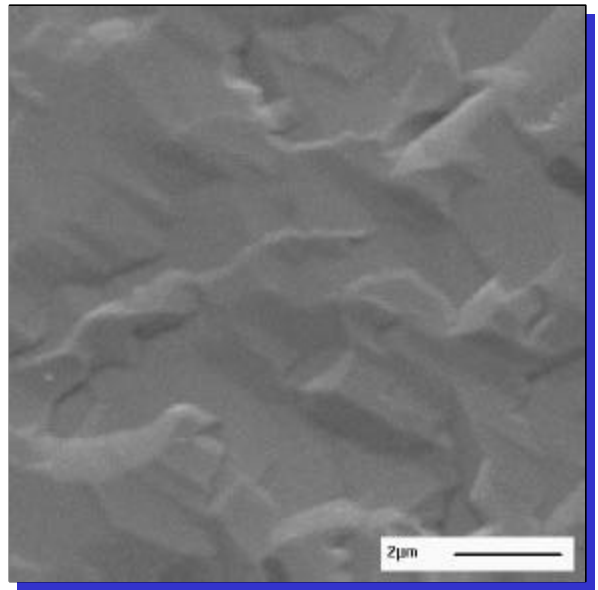
## Direct Silver Plating Results: SEM Analysis

- Increased adhesion
- Improved grain structure

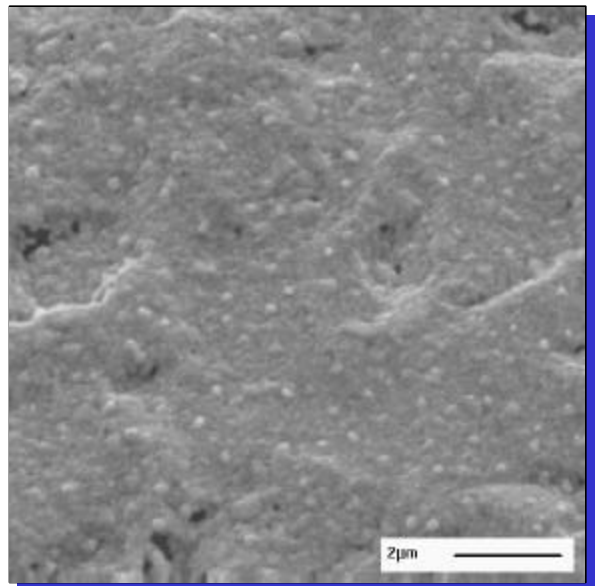
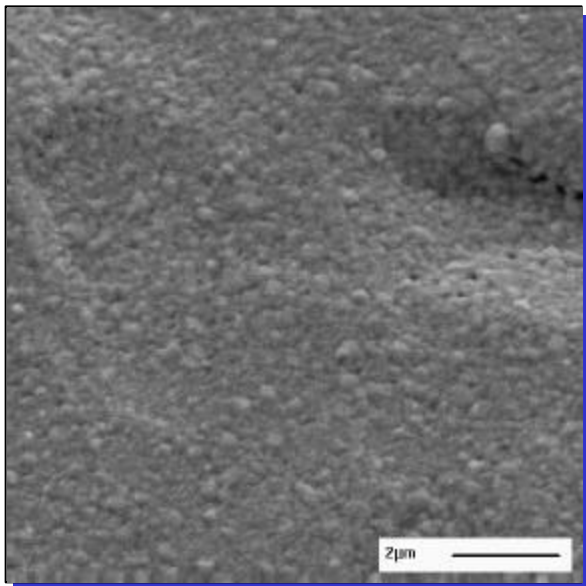
With Capacitively Coupled Plasma



Without Capacitively Coupled Plasma



As  
plated



After  
150°C  
bakeout

10KX magnification

**SAUNDERS & ASSOCIATES, LLC**