



## W-280B TCXO PROGRAMMING BENCHTOP SYSTEM

- TCXO Programmer/Analyzer
- Comprehensive oscillator waveform analysis
- Selectable test parameters with user defined QC limits
- User friendly *Windows*® System software
- All data is published in *Microsoft Access*™ compatible data base in real time
- Data can be exported to *Microsoft Excel*™ for custom data analysis



- Easily configured for different programming patterns
- Handles programming of up to 200 unique patterns
- Custom DLL interface for proprietary programming
- Checkout software can manually program or analyze TCXO's with customer specified IC's
- SMD Test Sockets available

### SPECIFICATIONS

Oscillator Frequency Range:

Probe Card Dependent

## SAUNDERS & ASSOCIATES, LLC

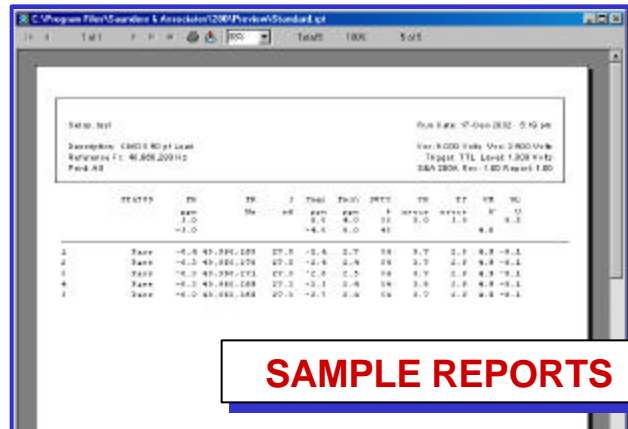
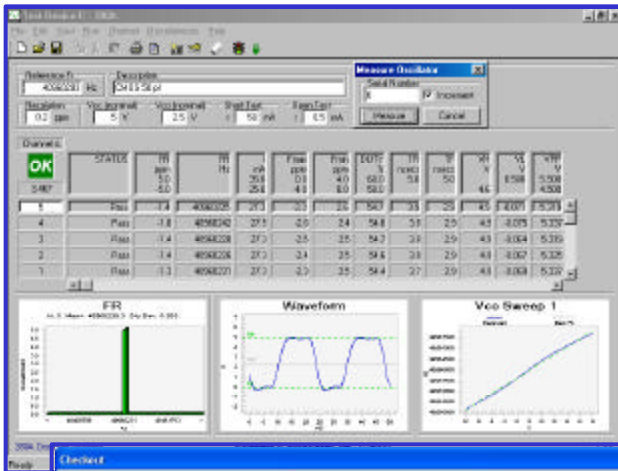
2520 E. Rose Garden Lane - Phoenix, Arizona 85050 USA (602) 971-9977 FAX (602) 971-5522  
E-Mail [sales@saunders-assoc.com](mailto:sales@saunders-assoc.com) - World Wide Web <http://www.saunders-assoc.com>

## MEASUREMENTS

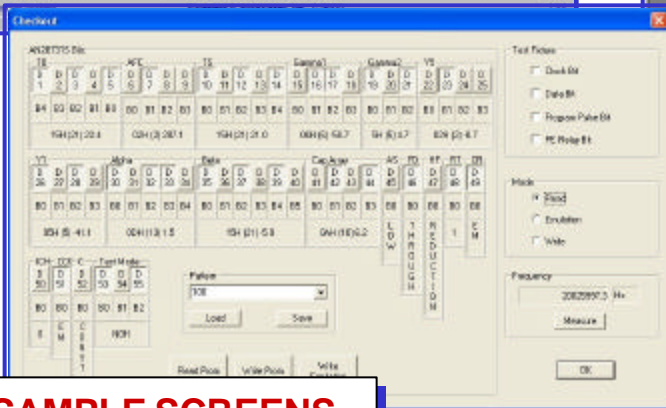
- Rise Time
- Fall Time
- Frequency
- Frequency Min.
- Frequency Max.
- Duty Cycle
- Logic High Level
- Logic Low Level
- Period
- Peak to Peak Voltage
- RMS Voltage
- Linearity
- High Pull
- Low Pull
- Total Pull
- Bin
- Date
- Time
- Jitter

## SYSTEM CONFIGURATION

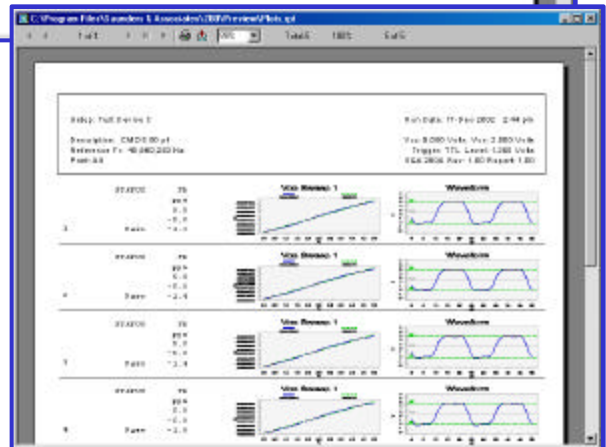
- Bench Top Fixture
- TCXO Probe Card
- Agilent 34401 DMM
- Chassis (optional)
- Printer (optional)
- Computer (minimum Pentium III, 2 PCI slots, 1 full size PCI slot)
- S&A MFC-100 Card (requires full size PCI slot)
- *Windows*® based System Software
- Oscilloscope and Network Router (optional)



## SAMPLE REPORTS



## SAMPLE SCREENS



# SAUNDERS & ASSOCIATES, LLC