



5600 Capacitively Coupled Plasma Option

FEATURES

- Improved blank surface preparation
- Direct silver plating, no flash required
- No special process gas required

OPTION PACKAGE

- SS antenna and distribution shields
- Impedance matching boxes
- Gate valve throttling kit
- Upgraded control box PCB
- Air bleed metering valve
- Software

RFX-600 Power Supply required

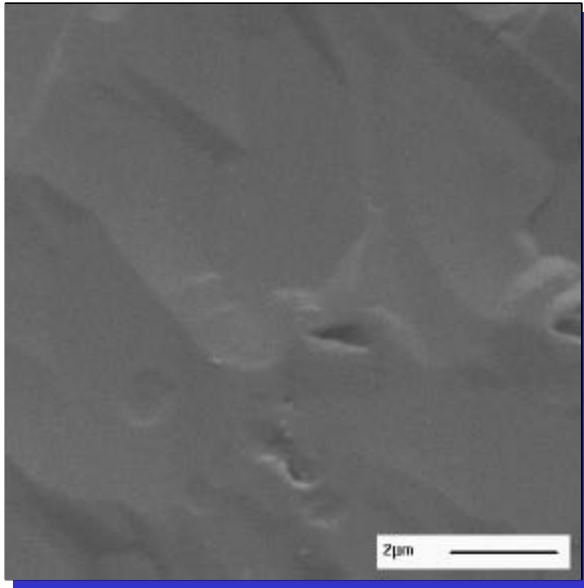
SAUNDERS & ASSOCIATES, INC.

2520 E. Rose Garden Lane - Phoenix, Arizona 85050 USA (602) 971-9977 FAX (602) 971-5522
E-Mail sales@saunders-assoc.com - World Wide Web <http://www.saunders-assoc.com>

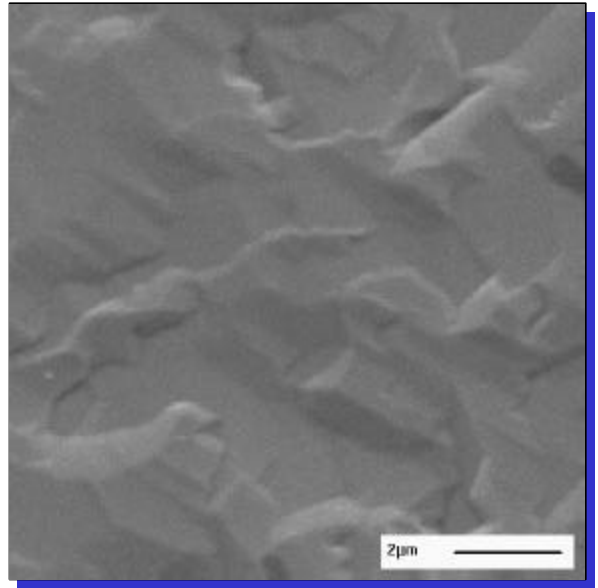
Direct Silver Plating Results: SEM Analysis

- Increased adhesion
- Improved grain structure

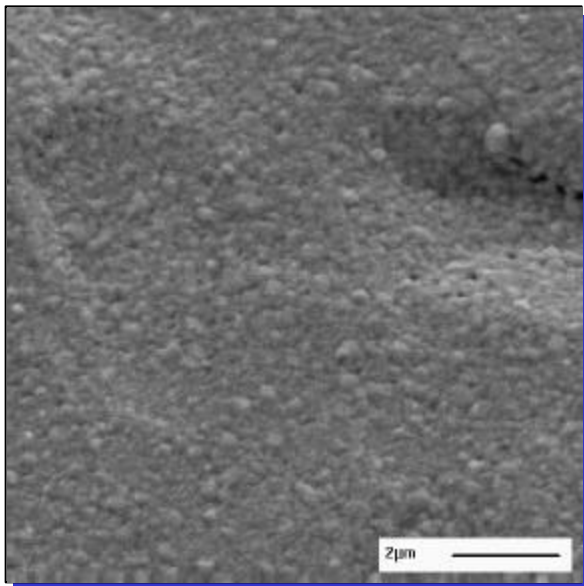
With Capacitively Coupled Plasma



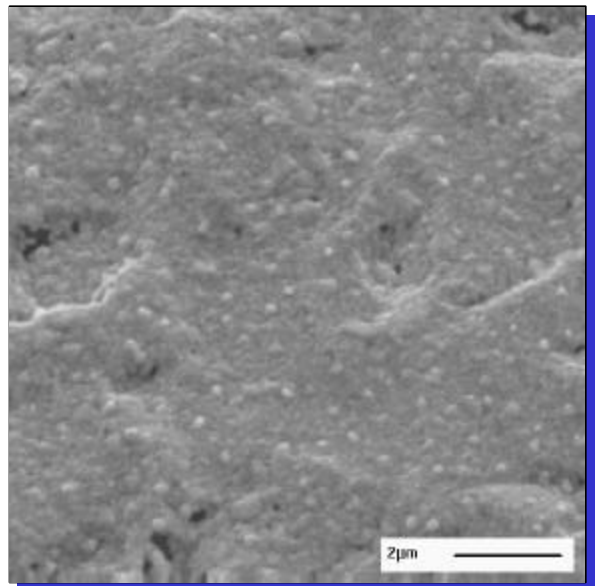
Without Capacitively Coupled Plasma



As
plated



After
150°C
bakeout



10KX magnification

SAUNDERS & ASSOCIATES, INC.