

S&A

W-5250S PLATING SYSTEM

- Quartz crystal final frequency adjust plating system
- Vertical evaporation and pulse width modulation of filament power results in minimal plating material usage
- Single aperture with three axis adjustment for simple plating spot alignment
- Precision plating to load resonant frequency using "Measured FL" method
- No physical capacitor required
- Over 40 different crystal parameter measurements, including DLD and Spurious
- Optional S&A 2296 Heater Kit for plating at crystal turning point temperature



- Proprietary magnetic wheel uses no sockets
- Contacts directly to crystal leads
- Standard wheel holds 50 devices and accepts HC-45 and HC-49 type packages
- 100 Position HC-49US wheel available
- Various HC-family, SMD and custom wheels available

SPECIFICATIONS

250B-1 Frequency Range:

15 KHz to 220 MHz

250C Frequency Range:

15 KHz to 500 MHz

Plating Performance:

± 1 ppm typical final frequency

± .1 ppm with S&A 2296 Heater Kit Option

Throughput:

500 units/hour (100 Position Wheel)

400 units/hour (50 Position Wheel)

SAUNDERS & ASSOCIATES, INC.

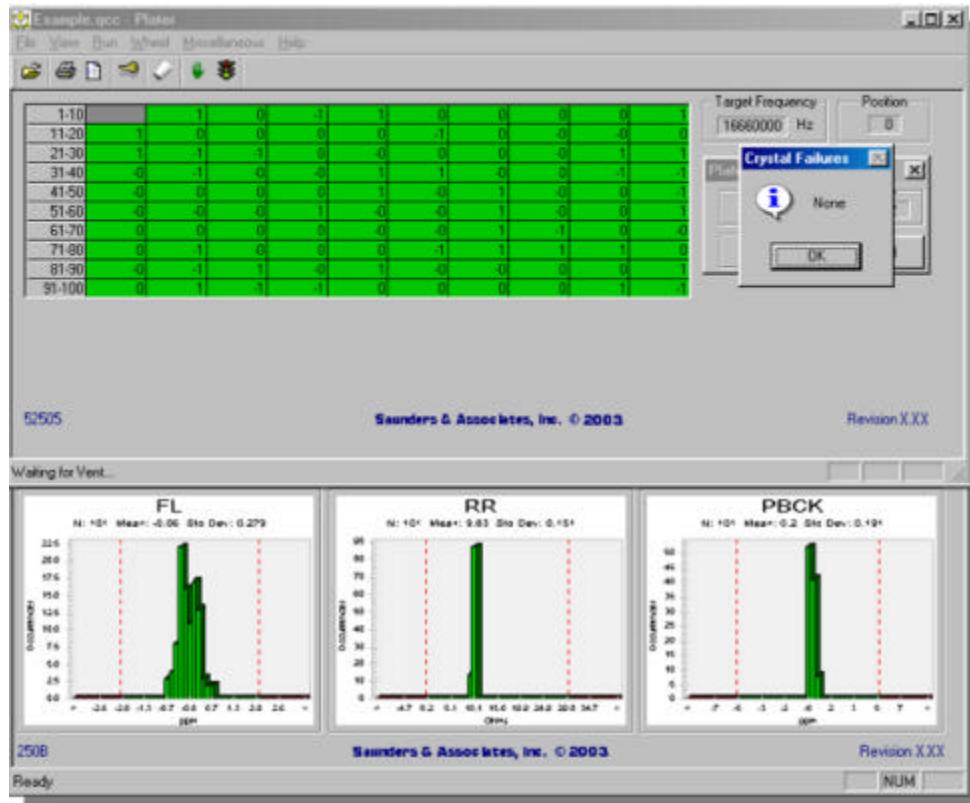
2520 E. Rose Garden Lane - Phoenix, Arizona 85050 USA (602) 971-9977 FAX (602) 971-5522

E-Mail sales@saunders-assoc.com - World Wide Web <http://www.saunders-assoc.com>

SYSTEM CONFIGURATION

- S&A 250B-1 or 250C Network Analyzer
- Direct Drive Roughing Pump
- Cryo, Diffusion or Turbo Pump
- Computer
- *Windows*[®] based System Software
- S&A PCI TTL I/O Card

SCREEN FORMAT



FACILITY REQUIREMENTS

- **Power:** 220 or 380 Volts, 3-Phase, 15 Amps
- **Inlet Pressures:** 150 PSIG Maximum
 - **Air:** 90 PSIG
 - **Nitrogen:** 20 PSIG
- **Water Cooling (Diffusion):** 0.15 GPM @ 60 - 80 Deg. F (16-27 Deg. C)
- **Dimensions:** 22 x 70 x 40 inches (54.6 x 177.8 x 101.6 cm)

SAUNDERS & ASSOCIATES, INC.