



W-280A/12SA OSCILLATOR PLATING SYSTEM

- Extremely fast oscillator plating system
- Plates two oscillators at the same time
- High conductance vacuum design for quick pump down
- Fast stepper motor drive system with 0.1 second index time
- Small chassis design for minimum clean room space requirement
- User-friendly *Windows*[®] based system software
- Easy load 126 position SMD plating discs
- Standard 6SA type filaments
- S&A 900A Plating Disc Unloader/Loader system available



SPECIFICATIONS

Typical Frequency Range:
Plating Performance:
Oscillator Analyzer:

1 MHz - 800 MHz
 ± 1 ppm typical final frequency
S&A 280A

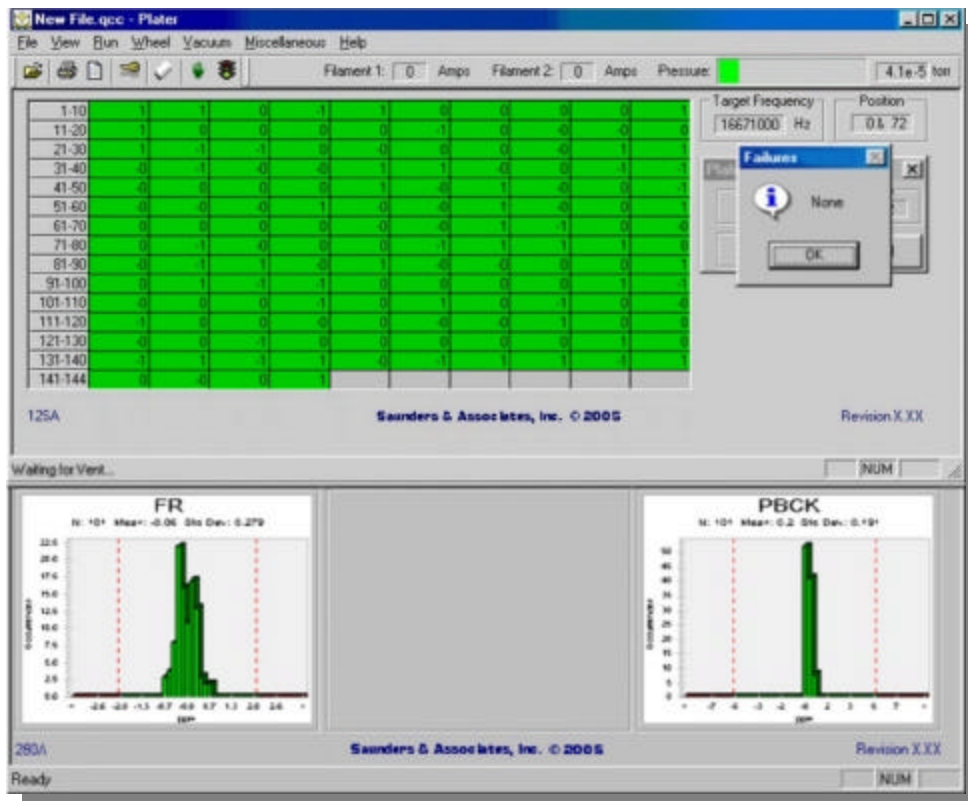
SAUNDERS & ASSOCIATES, INC.

2520 E. Rose Garden Lane - Phoenix, Arizona 85050 USA (602) 971-9977 FAX (602) 971-5522
E-Mail sales@saunders-assoc.com - World Wide Web <http://www.saunders-assoc.com>

SYSTEM CONFIGURATION

- Direct Drive Roughing Pump
- Diffusion or Turbo Pump
- Plating Discs (Optional)
- S&A MFC-100
- Computer
- *Windows*[®] based System Software
- Light Pole (Optional)

SCREEN FORMAT



FACILITY REQUIREMENTS

- **Power:** 380 Volts, 3-Phase, 15 Amps
- **Inlet Pressures:** 150 PSIG Maximum
 - **Air:** 90 PSIG
 - **Nitrogen:** 20 PSIG
- **Water Cooling (Diffusion):** 0.15 GPM @ 16-27° C
- **Dimensions:** W 60 x D 105 x H 100 cm

SAUNDERS & ASSOCIATES, INC.