

S&A

W-280B OSCILLATOR ANALYZER

- Comprehensive oscillator waveform analysis
- Precision time interval analysis of oscillator startup characteristics
- Selectable test parameters with user defined QC limits
- User friendly *Windows*® System software
- All data is published in *Microsoft Access*™ compatible data base in real time
- Data can be exported to *Microsoft Excel*™ for custom data analysis



- Tests primary output, complementary output, or differential outputs
- Tests both VCO and enable pin
- Support for both 6 pin and 4 pin devices



- Probe Cards available for
 - LVDS, PECL, ECL
 - CMOS, TTL
 - Custom
- SMD Test Sockets available
 - 5.0x7.5, 5.0x7.0, 4.8x7.3, 3.2x2.5, 2.5x2.0
- Leaded Test Sockets available for
 - 14 pin DIP/Full and Half
- Custom Test Sockets

SPECIFICATIONS

Oscillator Frequency Range:	10 KHz to 1 GHz
Oscilloscope Analog Bandwidth:	600 MHz (rise time 1% error at 5 nsec)
Oscillator X10 Probe Bandwidth:	1 KHz to 850 MHz (2.5 K Ohm Max Impedance)
Oscillator X50 Probe Bandwidth:	1 KHz to 500 MHz (12.5 K Ohm Max Impedance)

SAUNDERS & ASSOCIATES, INC.

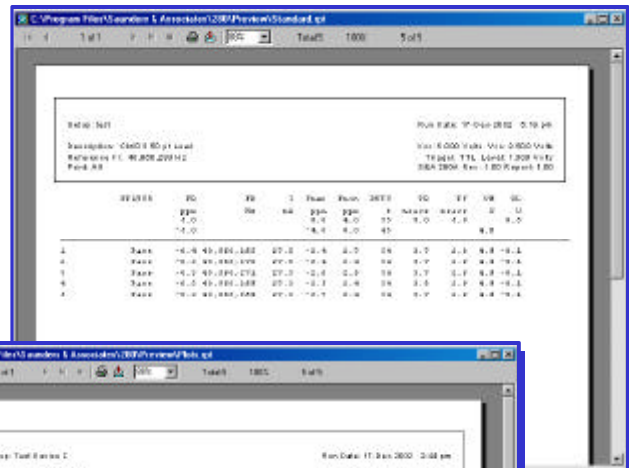
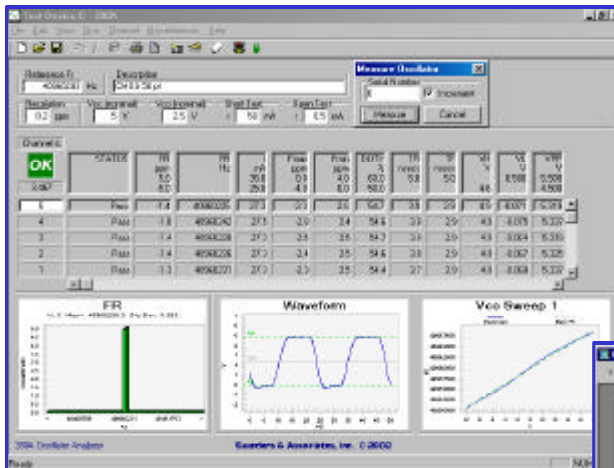
2520 E. Rose Garden Lane - Phoenix, Arizona 85050 USA (602) 971-9977 FAX (602) 971-5522
E-Mail sales@saunders-assoc.com - World Wide Web <http://www.saunders-assoc.com>

MEASUREMENTS

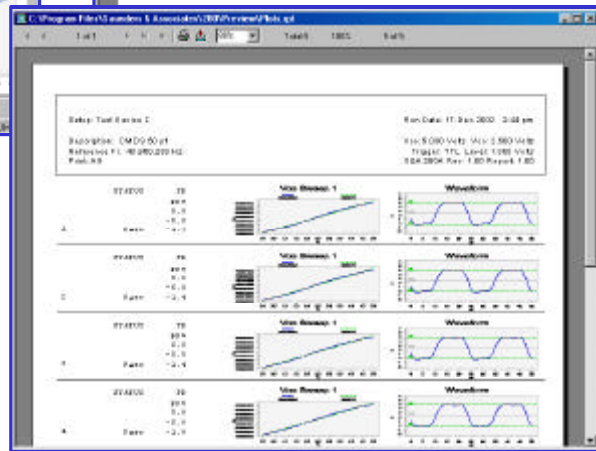
- Start-up Time
- Rise Time
- Fall Time
- Start Frequency
- Frequency
- Frequency Min.
- Frequency Max.
- Duty Cycle
- Enable Time
- Supply Current
- Logic High Level
- Logic Low Level
- Short Test
- Open Test
- Period
- Peak to Peak Voltage
- RMS Voltage
- Linearity
- High Pull
- Low Pull
- Total Pull
- Power
- Tri-State
- Bin
- Date
- Time
- Jitter

SYSTEM CONFIGURATION

- Bench Top Fixture
- Two Probe Cards
- Oscilloscope
- Chassis (optional)
- Printer (optional)
- Computer (minimum Pentium III, 2 PCI slots, 1 full size PCI slot)
- S&A MFC-100 Card (requires full size PCI slot)
- **Windows® based System Software**
- Network Router



SAMPLE REPORTS



SAUNDERS & ASSOCIATES, INC.