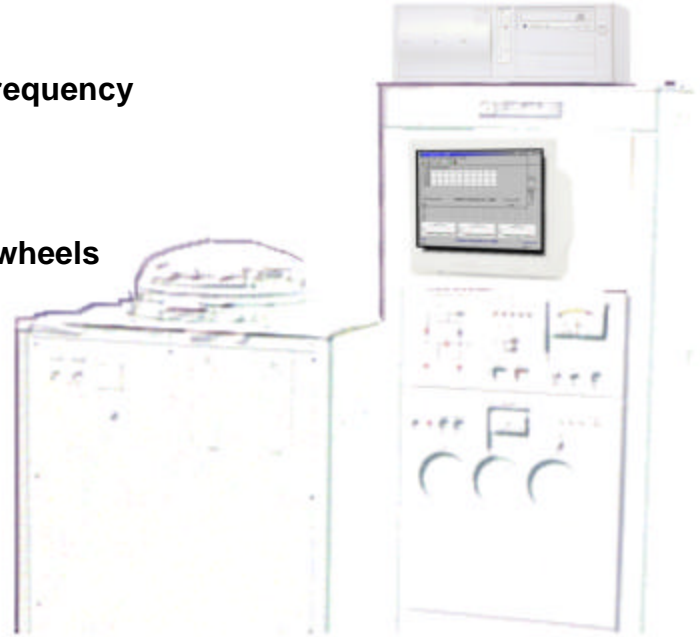




W-250B/6SA CRYSTAL PLATING SYSTEM UPGRADE

- Extends the frequency range of the SC-6SA Plating System¹ to 200 MHz
- Increases frequency accuracy
- Precision plating to load resonant frequency using “Measured FL” method
- No physical capacitor is required
- Uses existing filaments and crystal wheels
- Two Pass plating
- Over 40 different crystal parameter measurements including DLD and Spurious
- Measured parameters checked against user defined QC limits (No ring test required)
- Supports wheels with different number of positions (e.g. 72 or 144)
- Upgrade can be configured for a variety of plating system models



SPECIFICATIONS

Frequency Range :	1 MHz to 200 MHz
Plating Performance :	+/-2 ppm at series, typical *
Typical Process Time (144 Position Wheel) :	10 minutes + pump down time
Network Analyzer :	S&A 250B

* Proprietary measurement and calibration algorithms provide correlation to industry standard crystal measurement equipment.

¹ SC-6SA is a trademark of Showa Shinku Corporation, Japan

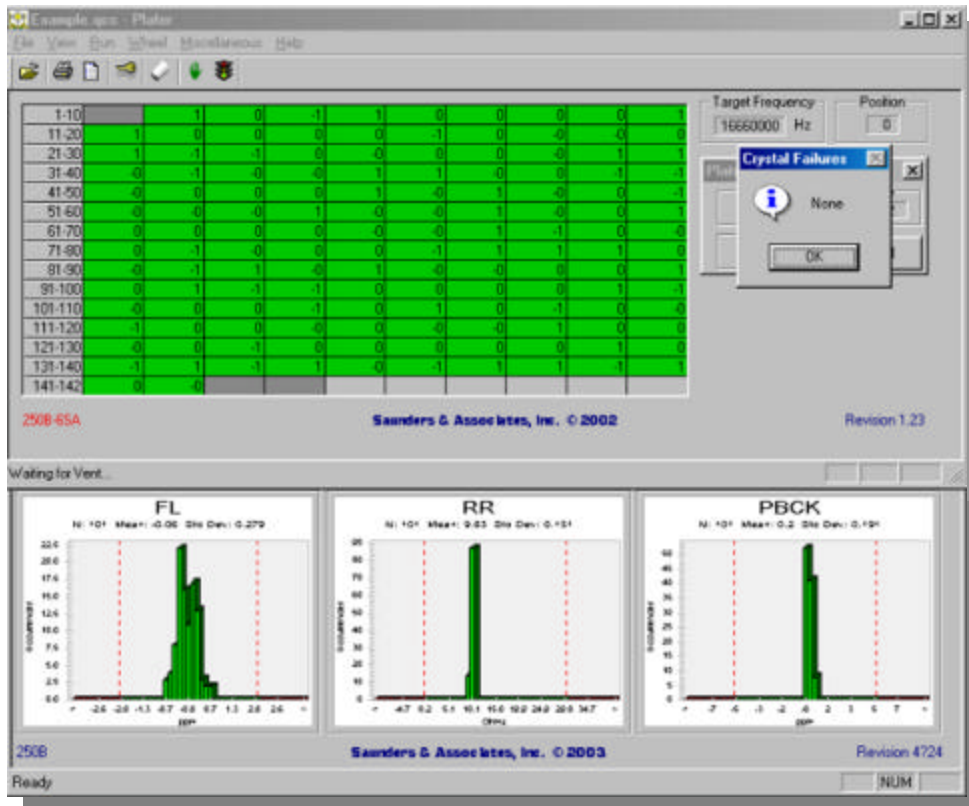
SAUNDERS & ASSOCIATES, INC.

2520 E. Rose Garden Lane - Phoenix, Arizona 85050 USA (602) 971-9977 FAX (602) 971-5522
E-Mail sales@saunders-assoc.com - World Wide Web <http://www.saunders-assoc.com>

SYSTEM CONFIGURATION

- S&A 250B Network Analyzer
- S&A 250B/6SA Relay Assembly
- 6SA Vacuum Feedthru Assembly
- *Windows*[®] based System Software
- S&A PCI TTL I/O Card
- IEC-444 PI Network
- Computer Requirement:
Minimum 500 MHz Pentium III,
full PCI slot with +5V & 3.3V power

SCREEN FORMAT



SAUNDERS & ASSOCIATES, INC.